

ENTERPRISE WITH FOREIGN INVESTMENTS «O'ZMINDA»



Company Information



Full name of company

EFI O'zMinda LLC

Company address

**FEIZ "Navoi" C-3
Navoi region, Uzbekistan**

Year of establishment

15.03.2010

Area / Building

25200 Sq.m /3240 Sq.m

Number of employees

95

PRODUCT PORTFOLIO - O'ZMINDA

Instrument cluster



Digital clock



Sensors



Actuators



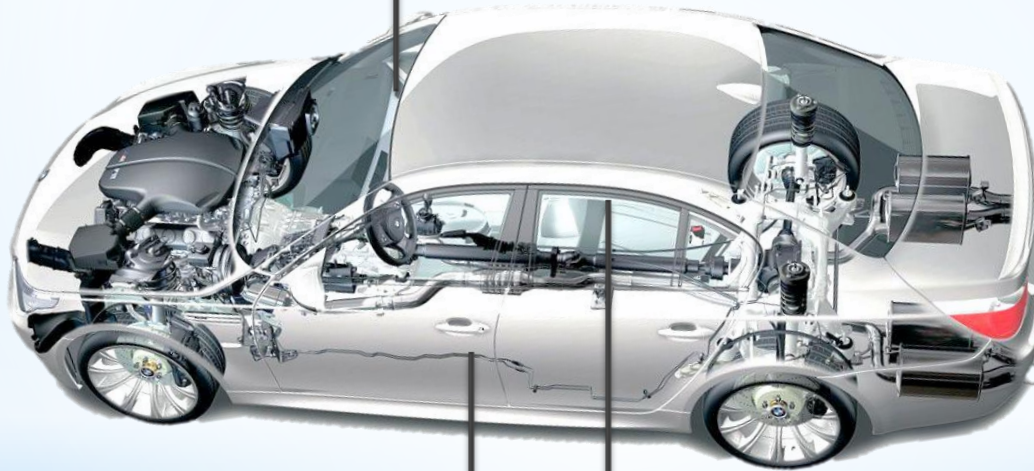
Relays



Chimebell



Electrical parts



Exterior

Interior



Outside door handles



Lock sets



Inside door handles
(under development)



Roof handles
(under development)

COMPANY AREAS- MOULDING SHOP



7 Injection molding machines of 3 brands (2 Ferromatik, 4 Dongshin Hydraulics and Windsor machines) with machine capacities range 120~250 ton. Currently plastic product nomenclature up to 50 various automobile plastic parts.

For plastic part production raw materials getting used are : PC, PA, PBT, PMMA, PP, EPDM etc. 4 engineers and 2 experienced quality person controls production of high quality plastic parts.



COMPANY AREAS- ASSEMBLY SHOP



Assembly shop: consist of various lines of Cluster, Digital clock, Outside door handle, Actuator, Relay, Chime bell, Key sets.

The product assembly capability of plant is 250 000 sets for each part.



COMPANY AREAS- LABORATORY



Quality and laboratory department have 8 highly experienced quality managers Permanently controlling the product quality. Every month Plant is getting audited by GM SQE team. QSB score is 86%. Production strongly follows the GM quality system requirements.

In the laboratory there are various type of testing machines such as: Functional testing machines for producing parts, Environmental Chamber, Universal Tensile Testing, Salt spray testing machine etc.



CLUSTER PRODUCTION 2010-2016 yy.



Model name	NEXIA N-150 (2 types)
------------	-----------------------

Start of production	2011 year
---------------------	-----------

Annual production volume (sets)	60 000
---------------------------------	--------

Annual production capacity (sets)	150 000
-----------------------------------	---------

Model name	MATIZ M-150 (5 types)
------------	-----------------------

Start of production	2011 year
---------------------	-----------

Annual production volume (sets)	30 000
---------------------------------	--------

Annual production capacity (sets)	100 000
-----------------------------------	---------

Model name	Aveo T250 (4 type)
------------	--------------------

Start of production	2016 year
---------------------	-----------

Annual production volume (sets)	60 000
---------------------------------	--------

Annual production capacity (sets)	220 000
-----------------------------------	---------

Model name	Lacetti J200 (8 type)
------------	-----------------------

Start of production	2017 year
---------------------	-----------

Annual production volume (sets)	60 000
---------------------------------	--------

Annual production capacity (sets)	220 000
-----------------------------------	---------

DOOR HANDLE PRODUCTION 2010-2016yy.



Model name	NEXIA N-150
Start of production	2011 year
Annual production volume (sets)	60 000
Annual production capacity (sets)	150 000



Model name	MATIZ M-150
Start of production	2011 year
Annual production volume (sets)	30 000
Annual production capacity (sets)	100 000



Model name	COBALT GSVEM
Start of production	2012 year
Annual production volume (sets)	60 000
Annual production capacity (sets)	220 000



Model name	Aveo T250
Start of production	2016 year
Annual production volume (sets)	60 000
Annual production capacity (sets)	200 000

FUTURE BUSINESS PROJECTS



Project name

**GAS ASSIST INJECTION
MOLDING**

Start of production

2016 year

Annual production volume (sets)

500 000

Annual production capacity (sets)

800 000



FUTURE BUSINESS PROJECTS



Project name	HVAC SWITCH MODULE
---------------------	---------------------------

Start of production	2018 year
---------------------	-----------

Annual production volume (sets)	200 000
---------------------------------	---------

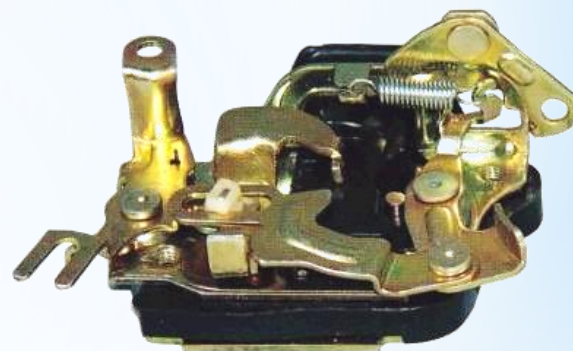
Annual production capacity (sets)	350 000
-----------------------------------	---------

Project name	DOOR LATCHES
---------------------	---------------------

Start of production	2017 year
---------------------	-----------

Annual production volume (sets)	100 000
---------------------------------	---------

Annual production capacity (sets)	150 000
-----------------------------------	---------



Project name	Painting shop
---------------------	----------------------

Start of production	2018 year
---------------------	-----------

Annual production volume (sets)	300 000
---------------------------------	---------

Annual production capacity (sets)	500 000
-----------------------------------	---------

FUTURE BUSINESS PROJECTS

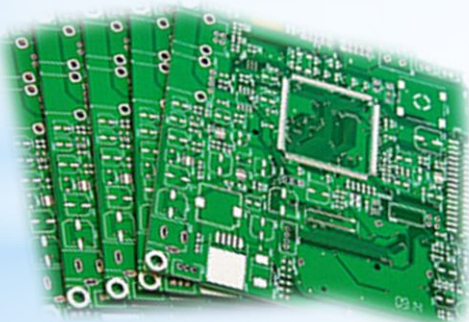


Project name	PCB SMT LINE
--------------	--------------

Start of production	2018 year
---------------------	-----------

Annual production volume (sets)	300 000
---------------------------------	---------

Annual production capacity (sets)	500 000
-----------------------------------	---------



NEW BUSINESS PARTNERSHIP FEATURES

- ❖ Current using production capacity 50% (considering 1 shift)
- ❖ 3 shift working can be settled
- ❖ 15 000 sq meter land for business expansion
- ❖ Experienced hardware engineers
- ❖ Continuous technical support of [UzAuto](#) (Turin Polytechnic University, Inha University in Tashkent, GM Uzbekistan, MAN Auto, SAM Auto, more than 50 joint venture companies)

CERTIFICATES

- ❖ In 2012 – International certificate **ISO 9001:2008.**
- ❖ In 2014 - has accredited the laboratory **ISO 17025.**
- ❖ In 2015 - International certificate **ISO TS16949.**



ADVANTAGES OF O'ZMINDA

- O'zMinda LLC is situated in Free Industrial Economic Zone of Navoi which gives the company advantages from customs facilities and taxes.
- Advantages of multimodal transport and logistics hub. Company is located 3km from Korean Air Cargo and 2 km from M-37 international road which gives the opportunity to supplies by Air, road and rail.
- Low manpower cost ensures competitive quote.
- Availability of high technology of production.
- Day to day Technical support of Spark Minda Group.

THANK YOU FOR ATTENTION!

THANK YOU FOR ATTENTION!